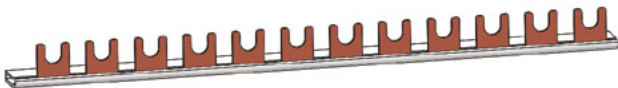


Fork Style, 10 mm<sup>2</sup>, single pole busbar, Bent 90° / Gabelstil, 10 mm<sup>2</sup>, einpolige Sammelschiene, um 90° gebogen / Estilo de horquilla, 10 mm<sup>2</sup>, barra colectora de un solo polo, doblada 90°

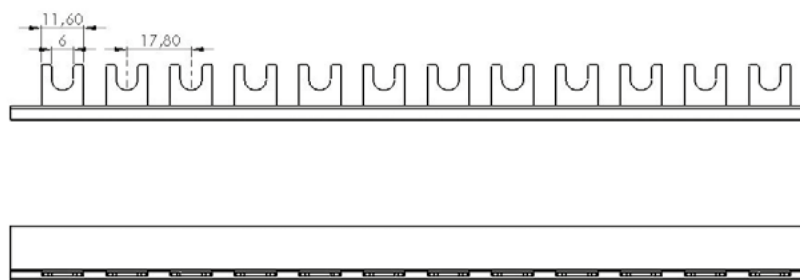
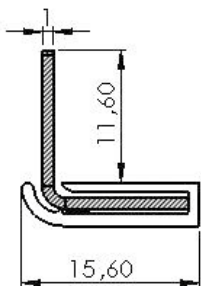
### IZ10/1F/L



| TECHNICAL DATA / TECHNISCHE DATEN / DATOS TÉCNICOS |  |         |
|--|--|---------|
| <b>U<sub>e</sub></b>                               | Nominal voltage / Bemessungsspannung / Tensión nominal de conexión                       | 240 [V] |
| <b>U<sub>i</sub></b>                               | Rated insulation voltage / Bemessungsisolationsspannung / Tensión nominal de aislamiento | 500 [V] |
| <b>I<sub>e</sub></b>                               | Max. current / max.Schienstrom / Capacidad de carga de corriente                         | 63 [A]  |
| <b>U<sub>imp</sub></b>                             | Surge voltage / Bemessungstossspannung / Tensión nominal de choque tolerada              | 4 [kV]  |
|  | Material of insulation / Werkstoff für Isolierung / Material de aislamiento              | PVC-U   |
|  | Material of conductor / elektrisches Leitermaterial / Material de conductor              | Cu-ETP  |

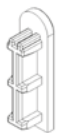
### Standard Variants (customable lengths) / Standardvarianten (anpassbare Längen) / Variantes estándar (longitudes personalizables)

| TYPE<br>TYP<br>TIPO | CROSS-SECTION<br>QUERSCHNITT<br>SECCIÓN<br>[mm <sup>2</sup> ] | MODULE DIMENSION<br>MASS MODULE<br>DIMENSIONES<br>DEL MÓDULO<br>[mm] | LENGTH*<br>LÄNGE<br>LONGITUD*<br>[mm] | MODULES<br>(LENGTH)<br>MODULE<br>(LÄNGE)<br>MÓDULOS<br>(LONGITUD) | CATALOGUE NUMBER<br>KATALOGNUMMER<br>NÚMERO DE CATÁLOGO | PACKAGING /<br>VERPACKUNG / EMBALAJE                                       |  |
|---------------------|---|--|---------------------------------------|---|---|--|--|
|                     |   |  |                                       |   |   | Single package /<br>Packungseinheit /<br>Embalaje individual<br>[pcs]/[kg] | Collective packaging /<br>Sammelverpackung /<br>Embalaje colectivo<br>[pcs]/[kg] |
| IZ10/1F/2/L         | 10  | 17,8   | 38                                    | 2   | 0110012602  | 40/0,35  | 480/4,08   |
| IZ10/1F/6/L         | 10  | 17,8   | 109                                   | 6   | 0110012606  | 40/1,05  | 480/12,24  |
| IZ10/1F/12/L        | 10  | 17,8   | 215                                   | 12  | 0110012612  | 40/2,10  | 480/24,48  |
| IZ10/1F/18/L        | 10  | 17,8   | 322                                   | 18  | 0110012618  | 40/3,15  |  |
| IZ10/1F/24/L        | 10  | 17,8   | 429                                   | 24  | 0110012624  | 40/4,20  |  |
| IZ10/1F/54/L        | 10  | 17,8   | 963                                   | 54  | 0110012654  | 40/9,45  |  |
| IZ10/1F/58/L        | 10  | 17,8   | 1034                                  | 58  | 0110012658  | 40/10,15   |  |



### ACCESSORIES / ZUBERHÖR / ACCESORIOS

| ENDCAP / ENDKAPPE / TAPÓN | TYPE<br>TYP<br>TIPO | CATALOGUE NUMBER<br>KATALOGNUMMER<br>NÚMERO DE CATÁLOGO | PACKAGING / VERPACKUNG / EMBALAJE |
|---------------------------|---------------------|---|-----------------------------------|
|                           |                     |   | [pcs]/[kg] [box]/[kg]             |
|                           | Z-10/1F/L           | 18  | /25/-0,005/ /250/-0,050/          |



Quality Control:



**TÜV**  
Verified product  
No: 0000082365  
www.certhkat.tuv-nord.pl



IEC 60947-7-1:2009